



Getting Started with Carnatic Music Level - 1 to 5

info@breathemusicacademy.com

<http://www.breathemusicacademy.com>

Table of Contents

Carnatic notes/ Swaras Summarized	3
LEVEL-1 SARALI & MADHYA-STHAYI VARISAIS	6
LEVEL-2 JANTA, DHATU & UPPER-STHAYI VARISAIS	9
LEVEL-2 STAGE-1 Janta Varisais	9
LEVEL-2 STAGE-2 Dhatu Varisais	13
LEVEL-2 STAGE-3 Upper Sthayi Varisais	14
LEVEL-3 SAPTA TAALA ALANKARAMS	16
LEVEL – 4 NOTTUSWARAMS & GEETHAMS	22
LEVEL-4 STAGE-1 NOTTUSWARAMS (Ragam: Sankarabharanam)	22
NOTE - 1 Syamale Meenakshi	22
NOTE - 2 Santhatham	23
NOTE - 3 Sakthi Sahitha Ganapathim	24
NOTE - 4 Vara Siva Balam	25
NOTE - 5 Rama Janardhana	26
NOTE - 6 Vande Meenakshi	27
LEVEL-4 STAGE-2 GEETHAMS	29
Geetham - 1 Sree Gana Natha (Malahari / Rupakam)	29
Geetham - 2 Kunda Goura (Malahari / Rupakam)	30
Geetham - 3 Kereya Neeranu (Malahari/ Tisra Jathi Triputa)	31
Geetham - 4 Padumanabha (Malahari / Tisra Jathi Triputa)	32
Geetham - 5 Aanalekara (Suddha Saveri / Tisra Jathi Triputa)	33
Geetham - 6 Vara Veena (Mohanam / Rupakam)	34
Geetham - 7 Kamala Jaadala (Kalyani / Tisra Jathi Truputa)	35
Geetham - 8 Janaka Sutha (Saveri / Rupakam)	36
Geetham - 9 Mandara Dharare (Kamboji / Adi)	37
Geetham - 10 Re Re Sree Rama Chandra (Arabhi / Tisra Jathi Triputa)	38
Geetham - 11 Kamala Sulochana (Ananda Bhairavi / Adi)	39
Geetham – 12 Shree Rama (Bhairavi / Chaturashra Jathi Dhruva)	40
LEVEL-5 SWARAJATHIS	42
Swarajathi - 1 Rara Venu Gopa pala (Bilahari / Adi)	42
Swarajathi - 2 Samba Sivaya (Khamas / Adi)	44
Swarajathi - 3 Raveme Maguva.. (Ananda Bhairavi / Adi)	46
APPENDIX	49
1) 72 Mela Karta Ragas	49

Conventions used in this book

All Swara notations are written in Upper case.

Upper case represents the middle/ reference Octave

Example: S represents the Adhara Shadjam / Reference "Sa"

A dot **above** the note represents the Upper-Octave (**above** the reference Sa (S) Example: \dot{R}

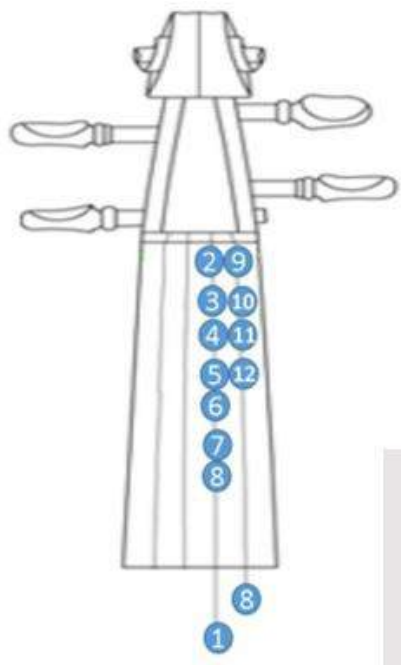
A dot **below** the note represents the Lower-Octave (**below** the reference Sa (S) Example: $\underset{\cdot}{D}$

Asterisk/ Star (*) above a note means that's a **Half-Note** in Carnatic Flute
(Sa = First two holes closed)

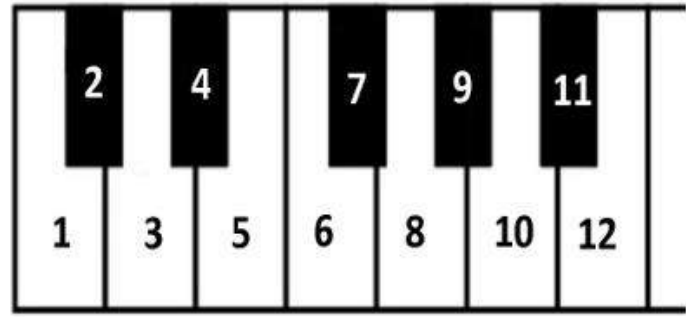
Carnatic notes/ Swaras Summarized

#	Note	Name of the Note	Western Note
1.	S	Shadjam	C
2.	R1	Suddha Rishabham	C# / D _b
3.	R2/ G1	Chatu-shruti Rishabham/ Suddha Gandharam	D
4.	R3/ G2	Shat-shruthi Rishabham / Sadharana Gandharam	D# / E _b
5.	G3	Antara Gandharam	E
6.	M1	Suddha Madhyamam	F
7.	M2	Prati Madhyamam	F# / G _b
8.	P	Panchamam	G
9.	D1	Suddha Dhaivatam	G# / A _b
10.	D2/ N1	Chatu-shruti Dhaivatam/ Suddha Nishadam	A
11.	D3/N2	Shat-shruti Dhaivatam / Kaishiki Nishadam	A# / B _b
12.	N3	Kakali Nishadam	B
	\dot{S}	Shadjam (Upper Sthayi/ Higher Octave)	\dot{C}

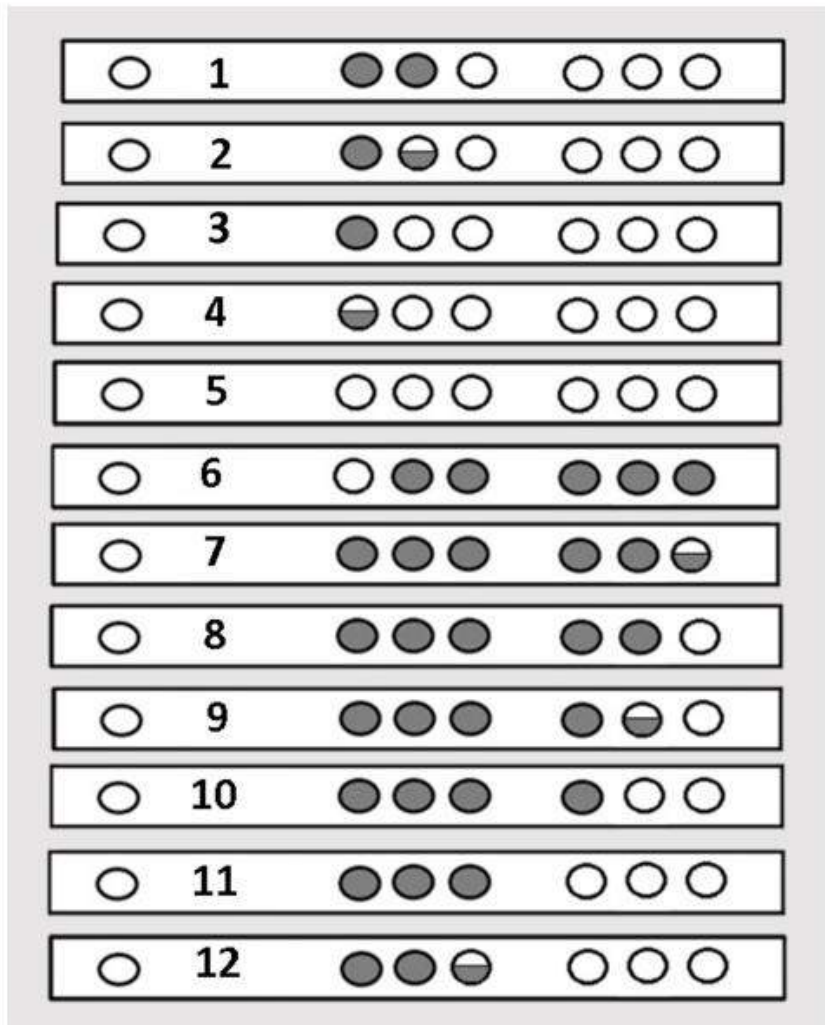
See next page for more details about these notes



VIOLIN



KEYBOARD



FLUTE

LEVEL-1

SARALI VARISAIS

MADHYA-STHAYI VARISAIS

LEVEL-1 SARALI & MADHYA-STHAYI VARISAIS

LEVEL-1 STAGE-1 Sarali Varisais

SARALI VARISAIS				
1	1	SRGM	PD	NŚ
	2	ŚNDP	MG	RS
2	1	SR SR	SR	GM
	2	SRGM	PD	NŚ
	3	ŚN ŚN	ŚN	DP
	4	ŚNDP	MG	RS
3	1	SRG S	RG	SR
	2	SRGM	PD	N Ś
	3	ŚND Ś	ND	ŚN
	4	ŚNDP	MG	RS
4	1	SRGM	SR	GM
	2	SRGM	PD	N Ś
	3	ŚNDP	ŚN	DP
	4	ŚNDP	MG	RS
5	1	SRGM	P,	SR
	2	SRGM	PD	N Ś
	3	ŚNDP	M,	ŚN
	4	ŚNDP	MG	RS
6	1	SRGM	PD	SR
	2	SRGM	PD	N Ś
	3	ŚNDP	MG	ŚN
	4	ŚNDP	MG	RS
7	1	SRGM	PD	N,
	2	SRGM	PD	N Ś
	3	ŚNDP	MG	R,
	4	ŚNDP	MG	RS
8	1	SRGM	PM	GR
	2	SRGM	PD	N Ś
	3	ŚNDP	MP	DN
	4	ŚNDP	MG	RS
9	1	SRGM	PM	DP
	2	SRGM	PD	N Ś
	3	ŚNDP	MP	GM
	4	ŚNDP	MG	RS

MADHYA-STHAYI VARISAIS				
1	1	SRGM	P ,	GM
	2	P , , ,	P ,	, ,
	3	GMPD	ND	PM
	4	GMPG	MG	RS
2	1	S, ND	N ,	DP
	2	D, PM	P ,	P ,
	3	GMPD	ND	PM
	4	GMPG	MG	RS
3	1	SS ND	NN	DP
	2	DD PM	P ,	P ,
	3	GMPD	ND	PM
	4	GMPG	MG	RS
4	1	SR GR	G ,	GM
	2	PM P ,	DP	D ,
	3	MP DP	DN	DP
	4	MP DP	MG	RS
5	1	SRGM	P ,	P ,
	2	DD P ,	MM	P ,
	3	DN S ,	SN	DP
	4	SNDP	MG	RS

LEVEL-2

JANTA VARISAIS

DHATU VARISAIS

UPPER-STHAYI VARISAIS

JANTA VARISAI - 1					
1	1	SS RR GG MM	PP DD	NN ŠŠ	
	2	ŠŠ NN DD PP	MM GG	RR SS	

JANTA VARISAI - 2					
2	1	SS RR GG MM	RR GG	MM PP	
	2	GG MM PP DD	MM PP	DD NN	
	3	PP DD NN ŠŠ	ŠŠ NN	DD PP	
	4	NN DD PP MM	DD PP	MM GG	
	5	PP MM GG RR	MM GG	RR SS	

JANTA VARISAI - 3					
3	1	SSR SSR SR	SS RR	GG MM	
	2	RRG RRG RG	RR GG	MM PP	
	3	GGM GGM GM	GG MM	PP DD	
	4	MMP MMP MP	MM PP	DD NN	
	5	PPD PPD PD	PP DD	NN ŠŠ	
	6	ŠŠN ŠŠN ŠN	ŠŠ NN	DD PP	
	7	NND NND ND	NN DD	PP MM	
	8	DDP DDP DP	DD PP	MM GG	
	9	PPM PPM PM	PP MM	GG RR	
	10	MMG MMG MG	MM GG	RR SS	

JANTA VARISAI - 4						
4	1	SS RR G SRG	SS RR	GG MM		
	2	RR GG M RGM	RR GG	MM PP		
	3	GG MM P GMP	GG MM	PP DD		
	4	MM PP D MPD	MM PP	DD NN		
	5	PP DD N PDN	PP DD	NN ŠŠ		
	6	ŠŠ NN D ŠND	ŠŠ NN	DD PP		
	7	NN DD P NDP	NN DD	PP MM		
	8	DD PP M DPM	DD PP	MM GG		
	9	PP MM G PMG	PP MM	GG RR		
	10	MM GG R MGR	MM GG	RR SS		

JANTA VARISAI - 5						
5	1	SS RR GG RR	SS RR	GG MM		
	2	RR GG MM GG	RR GG	MM PP		
	3	GG MM PP MM	GG MM	PP DD		
	4	MM PP DD PP	MM PP	DD NN		
	5	PP DD NN DD	PP DD	NN ŠŠ		
	6	ŠŠ NN DD NN	ŠŠ NN	DD PP		
	7	NN DD PP DD	NN DD	PP MM		
	8	DD PP MM PP	DD PP	MM GG		
	9	PP MM GG MM	PP MM	GG RR		
	10	MM GG RR GG	MM GG	RR SS		

JANTA VARISAI - 6						
6	1	SS, RR, GG	SS RR	GG MM		
	2	RR, GG, MM	RR GG	MM PP		
	3	GG, MM, PP	GG MM	PP DD		
	4	MM, PP, DD	MM PP	DD NN		
	5	PP, DD, NN	PP DD	NN ŠŠ		
	6	ŠŠ, NN, DD	ŠŠ NN	DD PP		
	7	NN, DD, PP	NN DD	PP MM		
	8	DD, PP, MM	DD PP	MM GG		
	9	PP, MM, GG	PP MM	GG RR		
	10	MM, GG, RR	MM GG	RR SS		

JANTA VARISAI – 7						
7	1	S,S R,R GG	SS RR	GG MM		
	2	R,R G,G MM	RR GG	MM PP		
	3	G,G M,M PP	GG MM	PP DD		
	4	M,M P,P DD	MM PP	DD NN		
	5	P,P D,D NN	PP DD	NN ŠŠ		
	6	Š,Š N,N DD	ŠŠ NN	DD PP		
	7	N,N D,D PP	NN DD	PP MM		
	8	D,D P,P MM	DD PP	MM GG		
	9	P,P M,M GG	PP MM	GG RR		
	10	M,M G,G RR	MM GG	RR SS		

JANTA VARISAI - 8							
8	1	SSS	RRR	GG	SS	RR	GG MM
	2	RRR	GGG	MM	RR	GG	MM PP
	3	GGG	MMM	PP	GG	MM	PP DD
	4	MMM	PPP	DD	MM	PP	DD NN
	5	PPP	DDD	NN	PP	DD	NN ŚŚ
	6	ŚŚŚ	NNN	DD	ŚŚ	NN	DD PP
	7	NNN	DDD	PP	NN	DD	PP MM
	8	DDD	PPP	MM	DD	PP	MM GG
	9	PPP	MMM	GG	PP	MM	GG RR
	10	MMM	GGG	RR	MM	GG	RR SS

JANTA VARISAI - 9							
9	1	SS	MM	GG	R,R	SS	RR GG MM
	2	RR	PP	MM	GG	RR	GG MM PP
	3	GG	DD	PP	MM	GG	MM PP DD
	4	MM	NN	DD	PP	MM	PP DD NN
	5	PP	ŚŚ	NN	DD	PP	DD NN ŚŚ
	6	ŚŚ	PP	DD	NN	ŚŚ	NN DD PP
	7	NN	MM	PP	DD	NN	DD PP MM
	8	DD	GG	MM	PP	DD	PP MM GG
	9	PP	RR	GG	MM	PP	MM GG RR
	10	MM	SS	RR	GG	MM	GG RR SS

DHATU VARISAI – 1						
1.	SRS	RG	RM	SMGR	SR	GM
2.	RGR	GM	GP	RPMG	RG	MP
3.	GMG	MP	MD	GDPM	GM	PD
4.	MPM	PD	PN	MNDP	MP	DN
5.	PDP	DN	DS	PSND	PD	NS
6.	SNS	ND	NP	SPDN	SN	DP
7.	NDN	DP	DM	NMPD	ND	PM
8.	DPD	PM	PG	DGMP	DP	MG
9.	PMP	MG	MR	PRGM	PM	GR
10.	MGM	GR	GS	MSRG	MG	RS

DHATU VARISAI – 2						
1.	SMG	RG	SR	SGRG	SR	GM
2.	RPMP	GM	RG	RMGM	RG	MP
3.	GDP	MP	GM	GPMP	GM	PD
4.	MND	PD	MP	MDPD	MP	DN
5.	PSN	DN	PD	PNDN	PD	NS
6.	SPDP	ND	SN	SDND	SN	DP
7.	NMP	DP	ND	NPDP	ND	PM
8.	DGM	PM	DP	DMPM	DP	MG
9.	PRGR	MG	PM	PGMG	PM	GR
10.	MSRS	GR	MG	MRGR	MG	RS

UPPER-STHAYI VARISAIS					
1	1	SRGM	PDNŚ	Ś, , ,	Ś, , ,
	2	DNŚR	ŚNDP	ŚNDP	MGRS
2	1	SRGM	PDNŚ	Ś, , ,	Ś, , ,
	2	DNŚR	ŚŚRŚ	ŚRŚN	DPMP
	3	DNŚR	ŚNDP	ŚNDP	MGRS
3	1	SRGM	PDNŚ	Ś, , ,	Ś, , ,
	2	DNŚR	ĠRŚR	ŚRŚN	DPMP
	3	DNŚR	ŚŚRŚ	ŚRŚN	DPMP
	4	DNŚR	ŚNDP	ŚNDP	MGRS
4	1	SRGM	PDNŚ	Ś, , ,	Ś, , ,
	2	DNŚR	ĠMĠR	ŚRŚN	DPMP
	3	DNŚR	ĠRŚR	ŚRŚN	DPMP
	4	DNŚR	ŚŚRŚ	ŚRŚN	DPMP
	5	DNŚR	ŚNDP	ŚNDP	MGRS
5	1	SRGM	PDNŚ	Ś, , ,	Ś, , ,
	2	DNŚR	ĠMPM	ĠRŚN	DPMP
	3	DNŚR	ĠMĠR	ŚRŚN	DPMP
	4	DNŚR	ĠRŚR	ŚRŚN	DPMP
	5	DNŚR	ŚŚRŚ	ŚRŚN	DPMP
	6	DNŚR	ŚNDP	ŚNDP	MGRS

LEVEL-3

SAPTA TAALA ALANKAARAMS

Basic Angas (Constituent Units) of a Talam (Rythmic Cycle)

#	Name of the Anga	Symbol	Duration (Aksharas)	Showing it
1	Anu-dhrutham	U	1 (Single)	One beat (Dhruvakam)
2	Dhrutham	O	2 (Double)	One beat (Dhruvakam) and Waving (Visarjitam)
3	Laghu	1	3 or more (Multiple)	One Beat (Dhruvakam) and counting of fingers starting with little finger (pinky)
4	Guru	8	8	
5	Plutham	1 or 1 S 8	12	
6	Kaaka Paadam	+	16	

Five Varieties / Jaathis, relating to Laghu

#	Name	Number of beats/ aksharas
1	Thisra Jaathi	3
2	Chathirashra Jaathi	4
3	Khanda Jaathi	5
4	Misra Jaathi	7
5	Sankeerna Jaathi	9
<i>There's no 6 & 8 as they can be represented by two 3's and 4's respectively</i>		

Representing a Talam:

Example: Chaturashra Jaathi Dhruva Taalam

Tala Signature: 1 0 1 1 1 = 4 (Chaturashram) 0 = 2

= 14 0₂ 1₄ 1₄ = 4 + 2 + 4 + 4 = 14 Beats / Aksharas

1) Chaturashra Jathi Dhruva Talam (14 O2 14 14)				
#	14	O2	14	14
1	SRGM	GR	SRGR	SRGM
2	RGMP	MG	RGMG	RGMP
3	GMPD	PM	GMPM	GMPD
4	MPDN	DP	MPDP	MPDN
5	PDNŚ	ND	PDND	PDNŚ
6	ŚNDP	DN	ŚNDN	ŚNDP
7	NDPM	PD	NDPD	NDPM
8	DPMG	MP	DPMP	DPMG
9	PMGR	GM	PMGM	PMGR
10	MGRS	RG	MGRG	MGRS

2) Chaturashra Jathi Matya Talam (14 O2 14)			
#	14	O2	14
1	SRGR	SR	SRGM
2	RGMG	RG	RGMP
3	GMPM	GM	GMPD
4	MPDP	MP	MPDN
5	PDND	PD	PDNŚ
6	ŚNDN	ŚN	ŚNDP
7	NDPD	ND	NDPM
8	DPMP	DP	DPMG
9	PMGM	PM	PMGR
10	MGRG	MG	MGRS

3) Chaturashra Jathi Rupaka Talam (O ₂ 1 ₄)		
#	O ₂	1 ₄
1	S R	S R G M
2	R G	R G M P
3	G M	G M P D
4	M P	M P D N
5	P D	P D N Ś
6	Ś N	Ś N D P
7	N D	N D P M
8	D P	D P M G
9	P M	P M G R
10	M G	M G R S

4) Misra Jathi Jhumpa Talam (1 ₇ U ₁ O ₂)			
#	1 ₇	U ₁	O ₂
1	SRG SR SR	G	M ,
2	RGM RG RG	M	P ,
3	GMP GM GM	P	D ,
4	MPD MP MP	D	N ,
5	PDN PD PD	N	Ś ,
6	ŚND ŚN ŚN	D	P ,
7	NDP ND ND	P	M ,
8	DPM DP DP	M	G ,
9	PMG PM PM	G	R ,
10	MGR MG MG	R	S ,

5) Tisra Jathi Triputa Talam (13 O ₂ O ₂)			
#	13	O ₂	O ₂
1	S R G	S R	G M
2	R G M	R G	M P
3	G M P	G M	P D
4	M P D	M P	D N
5	P D N	P D	N Ś
6	Ś N D	Ś N	D P
7	N D P	N D	P M
8	D P M	D P	M G
9	P M G	P M	G R
10	M G R	M G	R S

6) Khanda Jathi Ata Talam (15 15 O ₂ O ₂)				
#	15	15	O ₂	O ₂
1	S R, G,	S, R G,	M,	M,
2	R G, M,	R, G M,	P,	P,
3	G M, P,	G, M P,	D,	D,
4	M P, D,	M, P D,	N,	N,
5	P D, N,	P, D N,	Ś,	Ś,
6	Ś N, D,	Ś, N D,	P,	P,
7	N D, P,	N, D P,	M,	M,
8	D P, M,	D, P M,	G,	G,
9	P M, G,	P, M G,	R,	R,
10	M G, R,	M, G R,	S,	S,

7-A) Chathurashra Jathi Eka Talam (14)	
#	14
1	S R G M
2	R G M P
3	G M P D
4	M P D N
5	P D N Ś
6	Ś N D P
7	N D P M
8	D P M G
9	P M G R
10	M G R S

7-B) Sankeerna Jathi Eka Talam (19)	
#	19
1	S , R , G , MP D
2	R , G , M , PD N
3	G , M , P , DN Ś
6	Ś , N , D , PM G
7	N , D , P , MGR
8	D , P , M , GRS

LEVEL- 4 / STAGE – 1

NOTTUSWARAMS

LEVEL – 4 NOTTUSWARAMS & GEETHAMS

LEVEL-4 STAGE-1 NOTTUSWARAMS (Ragam: Sankarabharanam)

NOTE - 1 Syamale Meenakshi		
#	Ragam: Sankarabharanam	Talam: Adi
	Aro: S R2 G3 M1 P D2 N*3 Ś	Ava: ŚN*3 D2 P M1 G3 R2S
1	S, R G, M, SyAmalE Mee-	P,,, P,,, - nAkshi
2	D,, N Ś, Ś N SundarEswara	D, P, M, G, sAkshi
3	M, D, M, R, Sankari Gu-	G, P, G, S, -ru Guha Sa-
4	R, M, R, N, -mudhbhave Si-	S,,, S,,, -ve Va
5	P,,, P, P, PAmara	M,,, M, M, MOchani
6	G,,, G, G, Pankaja	R,,, R, R, LOchani
7	P,,, P, DP PadmAsana	M,,, M, PM Vani Hari
8	G,,, G, MG Lakshmi Vinu-	R,,, R, GR -the sAmbhavi
1	S, R G, M, SyAmalE Mee-	P,,, P,,, - nAkshi
2	D,, N Ś, Ś N SundarEswara	D, P, M, G, sAkshi
3	M, D, M, R, Sankari Gu-	G, P, G, S, -ru Guha Sa-
4	R, M, R, N, -mudhbhave Si-	S,,, S,,, -ve Va

NOTE - 2 Santhatham		
#	Ragam: Sankarabharanam	Talam: Rupakam
	Aro: S R2 G3 M1 P D2 N*3 Ś	Ava: ŚN*3 D2 P M1 G3 R2S
1	S , , , S ,	, , R , , ,
	San..tha..	tham..
2	N , , , , ,	S , R , , ,
	PA..	-hi Mam ..
3	G , , , G ,	, , M , , ,
	San..gee	.. tha
4	G , , , , ,	R , S , , ,
	SyA...	- ma..le
5	R , , , S ,	, , N , , ,
	Sar.. va	-dA ..
6	S , , , , ,	P , D , N ,
	Re..	Ja..na..ni
7	P , , , P ,	, , P , , ,
	Chin.. thi..	.. tha-
8	P , , , , ,	M , G , , ,
	-rtha	Pra.. de
9	M , , , M ,	, , M , , ,
	Chith.. Ru..	.. pi..
10	M , , , , ,	G , R , , ,
	ni ...	Si.. ve..
11	G , , , M ,	G , R , S ,
	Sree Gu..	-ru Guha
12	G , , , , ,	M , P , , ,
	Se...	vi.. the..
13	D . P , M ,	, , G , , ,
	Si..va Mo..	..ha ...
14	R , , , S ,	, , , , ,
	kA.. Re..

NOTE - 3 Sakthi Sahitha Ganapathim		
#	Ragam: Sankarabharanam	Talam: Adi Tisra Gathi
	Aro: S R2 G3 M1 P D2 N*3 Ś	Ava: ŚN*3 D2 P M1 G3 R2S
1	G , G GMG	R S R S , ,
	Sakthi Sahitha	Gana pathim
2	Ṇ , S R , Ṇ	S, R G , S
	Sanka .. rA..di	sEvi ..tham Vi-
3	G , G GMG	R S R SRG
	-raktha Sakala	Muni va.. ra Sura
4	M , G RGS	Ṗ S Ṇ S , ,
	Raja Vinutha	Guru Gu..ham
5	R , , Ṇ , Ṗ	S , G R , ,
	Bhak.. thAni	pOsha..kam
6	R GR Ṇ , Ṗ	S , G R , ,
	Bhava Sutham Vi-	..nA..yakam
7	PDP MPM	GMG R , ,
	Bhakthi mu..kthi pradam	BhooshithAngam
8	SRS ṆSṆ	Ṗ D Ṇ S , ,
	Raktha pa.dAm..bujam	BhAva..yA..mi
1	G , G GMG	R S R S , ,
	Sakthi Sahitha	Gana pathim
2	Ṇ , S R , Ṇ	S, R G , S
	Sanka .. rA..di	sEvi ..tham Vi-
3	G , G GMG	R S R SRG
	-raktha Sakala	Muni va.. ra Sura
4	M , G RGS	Ṗ S Ṇ S , ,
	Raja Vinutha	Guru Gu..ham

NOTE - 4 Vara Siva Balam		
#	Ragam: Sankarabharanam	Talam: Chaturashra Eka
	Aro: S R2 G3 M1 P D2 N*3 Ś	Ava: ŚN*3 D2 P M1 G3 R2S
1	G M G M D , P , Vara Siva BA..lam	G , P, M , R , Vallee LOlam
2	M , G, S , S , Vande Nandam	G M G M D , P , Hari hara MOdam
3	G , P, M , R , HamsA..nandam	S G S G S , , , Hasa..sa.. Mukam
4	N Ś N Ś Ġ , Ř , Guru Guha Roopam	N , Ř , Ś , D , GupthA.. kAram
5	Ś , N, P , P , GhO.. rak-sham..tham	N Ś N Ś Ġ , Ř , Rathi pathi sEnam
6	N , Ř , Ś , D , Subrah.. manyam	P D P D Ś , , , Sura vinu..tham
1	G M G M D , P , Vara Siva BA..lam	G , P, M , R , Vallee LOlam
2	M , G, S , S , Vande Nandam	G M G M D , P , Hari hara MOdam
3	G , P, M , R , HamsA..nandam	S G S G S , , , Hasa..sa.. Mukam

NOTE - 5 Rama Janardhana		
#	Ragam: Sankarabharanam	Talam: Adi Tisra Gathi
	Aro: S R2 G3 M1 P D2 N*3 Ś	Ava: ŚN*3 D2 P M1 G3 R2S
1	PPG PMR RAma ja..nAr.dhana	MGM PDN RAvana mardhana
2	ŚPD PMG RAmAnu.jAgraja	RGR R,, rAja vibho
3	PPG PMR pAmaRa mOchana	MGM PDN Pankaja LOchana
4	ŚPD PMG Bhaktha ja.. na priya	RGS S,, pAlaya mAm
5	GGG GGS Bhoomiha nAyaka	MMR MMR Bhukthi pra.. dAyaka
6	MPD PMG Bhoosura pA..lana	RGR R,, Bhoomi pa..the
7	GGG GGS syAmala vighraha	MMR MMR sAntha Guru guha
8	MPD PMG Sannutha Sree rAma	RGS S,, Chandra pra.bhO

NOTE - 6 Vande Meenakshi		
#	Ragam: Sankarabharanam	Talam: Adi
	Aro: S R2 G3 M1 P D2 N*3 Ś	Ava: ŚN*3 D2 P M1 G3 R2S
1	S , G, S, G , vandrE meenA..	S , G , M G R S ... kshi tvam sarasija
2	Ṇ , R , Ṇ , R , vaktrE parNE	Ṇ , R , G R S Ṇ durgE nata sura
3	S , G, S, G , bRndE saktE	S R G M P , , , guru guha Paa ..
4	M G R S G R S Ṇ .. lini jala ruha chara	S , , , , , , , nE ...
5	Ś , N D P , M , sundara pANDyA..	G , M , P , D , .. nandE mAyE
6	Ś , N D P , M , sUri janAdhA..	P , , , , , , , ..rE
7	Ś , N D P , M , sundara rAja sa..	G , M , P , D , .. hOdari gauri
8	M G R S G R S Ṇ Subha kari satatama..	S , , , , , , , .. ham

LEVEL- 4 / STAGE – 2

GEETHAMS

LEVEL-4 STAGE-2 GEETHAMS

Geetham - 1 Sree Gana Natha (Malahari / Rupakam)				
Ragam: Malahari		Aro: S R* ₁ M ₁ P D* ₁ Ś		Ava: Ś D* ₁ P M ₁ G ₃ R* ₁ S
Talam: Rupakam		Composer: Purandara Dasa		
1				
1	MP	D Ś Ś Ṛ	Ṛ Ś	DP M P
	Shree -	Ga na Na tha	Sin dU	- ra Var na
2	RM	P D MP	D P	M G R S
	Ka ru	na Sa ga ra	Ka ri	Va da na -
3	S,	RM GR	S R	G R S,,
	Lam-	Bo - da ra	La ku	mi ka ra -
4	RM	PD M P	D P	M G R S
	Am -	ba - Su tha	A ma	ra Vi nu tha
5	S,	RM GR	S R	G R S,,
	Lam-	Bo - da ra	La ku	mi ka ra..
2				
1	M P	D Ś Ś Ṛ	Ṛ Ś	DP M P
	Sid dha	Cha - ra na	Ga na	Se - vi tha
2	R M	P D MP	D P	M G R S
	Sid dhi	Vi na ya ka	the -	Na mo Na mo
3	S,	RM GR	S R	G R S,,
	Lam-	Bo- da ra	La ku	mi ka ra..
3				
1	MP	D Ś Ś Ṛ	Ṛ Ś	DP M P
	Sa ka	la Vi dyA -	- di	Pu - ji tha
2	RM	P D M P	D P	M G R S
	Sa -	Rvo - tha ma	the -	Na mo Na mo
3	S,	RM GR	S R	G R S,,
	Lam-	Bo- da ra	La ku	mi ka ra..

Geetham - 2 Kunda Goura (Malahari / Rupakam)				
Ragam: Malahari		Aro: S R* ₁ M ₁ P D* ₁ Ś		Ava: Ś D* ₁ P M ₁ G ₃ R* ₁ S
Talam: Rupakam		Composer: Purandara Dasa		
1				
1	DP	MGRS	RM	PDMP
	Kun da	Gou- - ra	Gou -	ri - Va ra
2	DĠ	ĠŚDP	DP	MGRS
	Man -	Di ra - ya	Ma -	na Ma ku ta
3	S,	R, R,	DP	MGRS
	Man -	da - ra -	Ku su	ma - ka ra
4	SR	M, GR	SR	GRS,
	Ma ka	ran - da m	Va -	si thu va -
2				
1	DP	MGRS	RM	PDMP
	He ma	Ku - - ta	Sim -	ha - sa na
2	DĠ	ĠŚDP	DP	MGRS
	Vi ru	pa - - ksha	Ka ru	na - ka ra
3	S,	R, R,	DP	MGRS
	Man -	da - ra -	Ku su	ma - ka ra
4	SR	M, GR	SR	GRS,
	Ma ka	ran - da m	Va -	si thu va -
3				
1	DP	MGRS	RM	PDMP
	Chan da	Ma - - ma	Man -	Da - ki ni
2	DĠ	ĠŚDP	DP	MGRS
	Man -	Di ra - ya	Ma -	na Ma ku ta
3	S,	R, R,	DP	MGRS
	Man -	da - ra -	Ku su	ma - ka ra
4	SR	M, GR	SR	GRS,
	Ma ka	ran - da m	Va -	si thu va -

Geetham - 3 Kereya Neeranu (Malahari/ Tisra Jathi Triputa)						
Ragam: Malahari		Aro: S R* ₁ M ₁ P D* ₁ Ś		Ava: Ś D* ₁ P M ₁ G ₃ R* ₁ S		
Talam: Tisra Jathi Triputa				Composer: Purandara Dasa		
1						
1	D Ś Ś	D P	M P	DDP	MM	P ,
	Ke re ya	Nee -	ra nu	Ke re ge	Chal -	li -
2	D D Ś	D P	M P	D D P	M G	R S
	Va ra va	Pa de	Da va	Ran - te	Ka -	ni ro
3	S R R	S R	S R	DDP	M G	R S
	Ha ri ya	Ka ru	na do	la - da	Bhya -	gya va
4	D P D	Ś ,	D P	D D P	M G	R S
	Ha ri Sa	mar -	pa ne	Ma - di	Ba du	ki ro
5	S R R	S R	S R	DDP	M G	R S
	Ha ri ya	Ka ru	na do	la - da	Bhya -	gya va
2						
1	D Ś Ś	D P	M P	DDP	MM	P ,
	Sree Pu	ran -	da ra	Vi ta la	Ra -	ya -
2	D D Ś	D P	M P	D D P	M G	R S
	Cha ra na	Ka ma	la va	No - di	Ba du	Ki ro
3	S R R	S R	S R	DDP	M G	R S
	Ha ri ya	Ka ru	na do	la - da	Bhya -	gya va
4	D P D	Ś ,	D P	D D P	M G	R S
	Ha ri Sa	mar -	pa ne	Ma - di	Ba du	ki ro
5	S R R	S R	S R	DDP	M G	R S
	Ha ri ya	Ka ru	na do	la - da	Bhya -	gya va

Geetham - 4 Padumanabha (Malahari / Tisra Jathi Triputa)						
Ragam: Malahari		Aro: S R* ₁ M ₁ P D* ₁ Ś			Ava: Ś D* ₁ P M ₁ G ₃ R* ₁ S	
Talam: Tisra Jathi Triputa				Composer: Purandara Dasa		
1						
1	R S D Pa du ma	S, na -	S, Bha -	M G R Pa ra ma	M M Pu ru	P, sha -
2	S D, Pa ram -	D P Jyo -	M P - thi	D D P Swa ru -	M G pa -	R S - -
3	R S D Vi du ra	S, Van -	S, dya -	M G R Vi ma la	M M Cha ri	P, tha -
4	S D, Vi han -	D P ga -	M P - dhi	D D P ro - ha	M G na -	R S - -
5	P M P U da dhi	D Ś Ni va	D Ś - sa	Ř Ś D U ra ga	D Ś Sa ya	D P na -
6	D D P U - nna	P, tho -	P M nna tha	R M M Ma hi -	P, ma -	P, - -
7	D D P Ya du ku	P, lo -	P M tha ma	R, M Ya - gna	M G Ra -	R S ksha ka
8	S, S A - gna	D D Si -	D P Ksha ka	P, P Ra - ma	M G Na -	R S - ma
1	R S D Pa du ma	S, na -	S, Bha -	M G R Pa ra ma	M M Pu ru	P, sha -
2						
1	D Ś, Vi bhee -	D P sha na	M P Pa -	D D P la ka -	M G Na mo	R S Na mo
2	D Ś, i bha -	D P Va ra	M P da -	D D P ya ka -	M G Na mo	R S Na mo
5	P M P Su bha -	D Ś Pra da	D Ś Su ma	Ř Ś D no - ra	D Ś da -	D P - du
6	D D P re - n dra	P, Ma -	P M no -	R M M ran - ja	P, na -	P, - -
7	D D P A bhi -	P, na -	P M va Pu	R, M ran - da	M G ra -	R S - Vi
8	S, S tal - la	D D Bhal -	D P la re	P, P Ra - ma	M G Na -	R S - ma
1	R S D Pa du ma	S, na -	S, Bha -	, , , - - -	, , - -	, , - -

Geetham - 5 Aanalekara (Suddha Saveri / Tisra Jathi Triputa)						
Ragam: Suddha Saveri		Aro: S R ₂ M ₁ P D ₂ Ś			Ava: Ś D ₂ P M ₁ R ₂ S	
Talam: Tisra Jathi Triputa						
1	Ṛ Ṙ Ṛ	D Ś	D Ś	Ś , Ś	D P	M P
	A - na	le -	ka ra	Un - ni	Po -	la di
2	D D Ś	D ,	D P	P M R	D D	D P
	Sa ka la	Sha -	stra Pu	ra - na	Di -	nam -
3	P , P	D D	D P	P , P	M P	D P
	Tha - la	Di -	nam -	Tha - la	Pa ri	ga thu
4	P M R	S R	S R	P M P	S R	S R
	Re - re	A -	- -	A - -	A -	- -
5	P P D	P P	M R	R S R	M ,	M ,
	A - -	A -	- -	Se - thu	Va -	ha -
6	D P D	Ś ,	Ś ,	Ṛ Ṛ Ś	D P	M P
	Pa ri ga	tham -	nam -	Ja ta -	ju -	- ta
7	D D Ś	D ,	D P	P M R	D D	D P
	Sa ka la	Sha -	stra Pu	ra - na	Di -	nam -
8	P , P	D D	D P	P , P	M P	D P
	Tha - la	Di -	nam -	Tha - la	Pa ri	ga thu
9	P M R	S R	S R	P M P	S R	S R
	Re - re	A -	- -	A - -	A -	- -
10	P P D	P P	M R	R S R	M ,	M ,
	A - -	A -	- -	Se - thu	Va -	ha -
11	D P D	Ś ,	Ś ,			
	Pa ri ga	tham -	nam -			

Geetham - 6 Vara Veena (Mohanam / Rupakam)				
Ragam: Mohanam		Aro: S R ₂ G ₂ P D ₂ Ś		Ava: Ś D ₂ P G ₂ R ₂ S
Talam: Rupakam				
1	G G	P, P,	D P	Ś, Ś,
	Va ra	Vee - na -	Mru du	Pa - ni
2	Ṛ Ś	D D P,	D P	G G R,
	Va na	ru ha lo -	cha na	Ra - ni -
3	G P	D Ś D,	D P	G G R,
	Su ru	chi ra pam -	ba ra	Ve - ni -
4	G G	D P G,	P G	G R S,
	Su ra	nu tha Kal -	ya -	- - ni -
5	G G	G G R G	P G	P, P,
	Ni ru	pa ma shu bha	Gu na	Lo - la -
6	G G	D P D,	D P	Ś, Ś,
	Ni ra	tha ja ya -	Pra da	See - la -
7	D Ḡ	Ṛ Ṛ Ś Ś	D Ś	DD D P
	Va ra	da - Pri ya	Ran ga	Na - ya ki
8	G P	D Ś D P	D P	G G R S
	Va -	nchi tha phla la	Da -	- - ya ki
9	S R	G, G,	G R	P G R,
	Sa ra	si - ja -	sa na	Ja na ni -
10	S R	S G R S		
	Ja ya	Ja ya Jaya		
11	G G	P, P,	D P	Ś, Ś,
	Va ra	Vee - na -	Mru du	Pa - ni

Geetham - 7 Kamala Jaadala (Kalyani / Tisra Jathi Truputa)						
Ragam: Kalyani		Aro: SR ₂ G ₃ M* ₂ PD ₂ N* ₃ Ś			Ava: Ś N* ₃ D ₂ P M* ₂ G ₃ R ₂ S	
Talam: Tisra Jathi Triputa						
1	Ś Ś Ś Ka ma la	N D Ja -	N Ś da la	N D P Vi ma la	D P Su na	M P ya na
2	G M P Ka ri Va	P D ra da	D N Ka ru	D P M na - mbu	P G dhe -	R S - -
3	Ḍ Ḍ Ḍ Ka ru na	G R Sa ra	G , de -	M P , Ka ma -	M G la -	R S - -
4	R , , Ka - -	S , ntha -	, , - -	G M P Ke - si	M P Na ra	D P ka -
5	N D P Su ra vi	D P be -	M P da na	G M P Va ra da	P D Ve -	D N - la
6	D P M Su ra Pu	P G ro -	R S tha ma	Ḍ Ḍ Ḍ Ka ru na	G R Sa ra	G , de -
7	M P , Ka ma -	M G la -	R S - -	R , , Ka - -	S , ntha -	, , - -

Geetham - 8 Janaka Sutha (Saveri / Rupakam)				
Ragam: Saveri		Aro: S R* ₁ M ₁ P D* ₁ Ś		Ava: Ś N* ₃ D* ₁ P M ₁ G ₃ R* ₁ S
Talam: Rupakam				
1	Ḍ S	R M M,	M G	G, R R
	Ja na	ka Su tha -	Ku cha	Kum - ku ma
2	G ,	R R G ,	R R	S Ḍ S ,
	Pan -	ki tha la -	ncha nu	Re - Re -
3	D D	P M P ,	P M	G R S R
	Ba li	ha ru re -	Kha ga	Va - ha na
4	P M	G R R M	G R	S , S ,
	Ka -	nchi - Pu ri	Ni la	ya - - -
5	S R	S , N Ḍ	S R	M , G R
	Ka ri	Ra - ksha ka	Bhu ja	Vi - kra ma
6	M ,	P D P M	P D	P , P P
	Ka -	mi tha pha la	Da -	- - ya ka
7	R R	M M P ,	D P	D P P M
	Ka ri	Va ra da -	Kal -	ya - - na
8	P D	Ś , N D	N D	P D M ,
	Perun	De - vi Ma	no -	ha ru re -
9	D P	P M G R	R M	G R S ,
	Ka ri	Gi ri ni -	Va -	- su re

Geetham - 9 Mandara Dharare (Kamboji / Adi)			
Ragam: Kamboji		Aro: S R ₂ G ₃ M ₁ P D ₂ Ś	
Talam: Adi		Ava: Ś N ₂ D ₂ P M ₁ G ₃ R ₂ S	
1	Ś, N* P	D D	Ś,
	Man - da ra	Dha ra	re -
2	D Ś R Ġ	Ṁ Ġ	Ġ R
	Mo - ksha mu	ra -	- re
3	Ś R Ś Ś	N N	D P
	Dai - thya Ku	la -	ntha ka
4	D D P M	G M	P,
	Pa - va na	Mu ru	the -
5	G P D Ś	N N	D P
	Pa da shu bha	re -	- ka
6	D D P P	M G	R S
	Ma ku ta Ma	yu -	- ra
7	G P P D	D Ś	Ś R
	A - - -	a -	- -
8	R P Ṁ Ġ	R Ġ	R Ś
	A - - -	a -	- -
9	Ś R Ś Ś	N N	D P
	Dai - thya Ku	la -	ntha ka
10	D D P M	G M	P,
	Pa - va na	Mu ru	the -
11	G P D Ś	N N	D P
	Pa da shu bha	re -	- ka
12	D D P P	M G	R S
	Ma ku ta Ma	yu -	- ra
1	Ś, N* P	D D	Ś,
	Man - da ra	Dha ra	re -

Geetham - 10 Re Re Sree Rama Chandra (Arabhi / Tisra Jathi Triputa)						
Ragam: Arabhi		Aro: S R ₂ M ₁ P D ₂ Ś			Ava: Ś N* ₃ D ₂ P M ₁ G ₃ R ₂ S	
Talam: Tisra Jathi Triputa						
1	P , P Re - Re	M M Sree -	P , Ra -	M G R - - ma	S R Chan -	M G - -
2	R R S - - -	S Ḍ - -	R S - -	R , , ndra - -	R , - -	S R Ra ghu
3	M G R Vam - sa	R S Thi la	S , Ka -	P M M Ra - gha	P , ven -	P , Dra
4	P M P A - -	M G - -	R R - -	M G R a - -	S R - -	S S - -
5	S Ḍ R A - -	S R - -	S S - -	Ḍ S , a - -	Ḍ Ḍ sri tha	Ḍ P̣ ja na
6	P̣ Ṃ P̣ Po - sha	Ḍ S ku -	S , re -	R S R Sree - -	M G tha -	R R - Ma
7	M G R no - -	M M Ran -	P M ja nu	P , P re - re	P , Dhee -	P , ra -
8	P M P Ra - va	D Ś na -	Ś Ṛ su ra	Ṃ G̣ Ṛ An - tha	Ś Ṛ ku -	Ś Ś re -
9	Ś Ḍ Ṛ A - -	Ś Ṛ yi ya	Ś Ś yi ya	D Ś , A - -	D D yi ya	D P yi ya
10	P M P A - -	D Ś yi ya	Ś , re -	Ś , Ś Dee - na	D D ja na	P , Man -
11	P M P da - ru	M G Ma -	R R ma va			
12	P , P Re - Re	M M Sree -	P , Ra -	M G R - - ma	S R Chan -	M G - -
13	R R S - - -	S Ḍ - -	R S - -	R , , ndra - -	R , - -	S R Ra ghu
14	M G R Vam - sa	R S Thi la	S , Ka -			

Geetham - 11 Kamala Sulochana (Ananda Bhairavi / Adi)			
Ragam: Ananda Bhairavi		Aro: SG*2 R2G*2 M1 PD2PŚ	
Talam: Adi		Ava: ŚN2 D2P M1 G*2 R2 S	
1	N D N Ś Ka ma la Su	Ś , lo -	N Ś cha na
2	Ġ Ġ Ś N Vi ma la Tha	N D ta -	P M ki ni
3	P P P D Ma ra - la	N D Ga -	P M mi ni
4	M P M P Ka ri ha ra	G R Ma -	S , dhye -
5	S , N , Bim - ba -	S G - -	G M na na
6	G M P M Vi du man -	G R da la	S , re -
7	P , M G Chan - da na	M , Kum -	G R Ku ma
8	G , R N Sam - ka li	S , tha -	S , - -
9	P P M G Pa ri ma la	M M Ka -	G R sthu ri
10	G G R N Thi la ka tha	S , re -	S , re -
11	S G R G Ja - - ji	M G sai -	M , ya -
12	P N D N Ka cha Ku cha	P D Gha na	N Ś Ja gha
13	Ġ Ġ Ś N nam - - -	N D bo -	P M - ja
14	P P P D Ma ra - la	N D Ga -	P M mi ni
15	M P M P Ka ri ha ra	G R Ma -	S , dhye -
16	S , N , Bim - ba -	S G - -	G M na na
17	G M P M Vi du man -	G R da la	S , re -

Geetham – 12 Shree Rama (Bhairavi / Chaturashra Jathi Dhruva)				
Ragam: Bhairavi		Aro: SG*2 RG*2 M ₁ P D ₂ N ₂ Ś		Ava: ŚN ₂ D* ₁ P M ₁ G* ₂ R ₂ S
Talam: Chaturashra Jathi Dhruva Talam				
1	G R G M	P ,	M G R G	M P M ,
	Shree - Ra -	ma -	Chan - dra -	Sri tha Pa -
2	P D N N	D P	M N D P	M G R S
	- ri ja -	- tha	Sa ma - -	- - - stha
3	S R S P	M P	G R G M	G G R S
	Kal - - ya	- na	Gun a - bhi	Ra - - ma
4	R R G G	M M	G G R G	M P M M
	See - tha -	Mu kha	am - - -	bo - ru ha
5	P D D N	N Ś	P D N Ś	Ṛ Ḡ Ṛ Ś
	San - - -	- cha	ree - - -	- - - ka
6	N Ṛ Ś Ḡ	Ṛ Ś	N N D M	P D N Ś
	Ni ran - tha	ram -	Man - ga la	Ma - - tha
7	P D P Ś	N Ś	P D M P	G , R S
	no - - thu	- -	- - - -	- - - -
1	G R G M	P ,	, , , ,	, , , ,
	Shree - Ra -	ma -	- - - -	- - - -

LEVEL-5

SWARAJATHIS

LEVEL-5 SWARAJATHIS

Swarajathi - 1 Rara Venu Gopa pala (Bilahari / Adi)			
Ragam: Bilahari		Aro: S R ₂ G ₃ P D ₂ Ś	
Talam: Adi		Ava: Ś N* ₃ D ₂ P M ₁ G ₃ R ₂ S	
PALLAVI			
1	S,, R G, P,	D, Ś,	N, D,
	Ra -- ra Ve - nu -	Go - pa -	Pa - la -
2	P, D P M G R S	R S N D	S,,,
	Ra - ji tha Sath- gu na	Ja ya Shee -	la ---
ANUPALLAVI			
1	S,, R G, P,	M,, G	P, D,
	Sa -- ra Sa - ksha -	Ne - - ra	Me - mi
2	Ṛ,, Ś N, D,	P,, M	G, R,
	Ma -- ru ba - da -	Kor -- va	le - ra - (Pallavi)
CHARANAM-1			
1	S,, R G, G,	G,,,	,, R G
	Nan -- da Go - pa -	la - - -	- - Ne -
2	P,, P P, P,	P,,,	,, D P
	nen -- du po - ja -	la ---	- - Nee -
3	Ś,, Ś Ś, Ś,	Ḡ Ṛ Ś N	N D P,
	Vin -- du ra - ra -	Sa tha ma la	ma di lo -
4	PD PM G G R,	G P M G	R S R G
	Mu da ma la ra ka na -	Ke thu ru ga	Ga thi ya ra (Pallavi)
CHARANAM-2			
1	P P P, R R R,	G P M G	G,,,
	Pa lu ma - ru nu ga -	Ra va mu na	Nin ---
2	G P M G M G R S	R G R S	S,,,
	Pi la chi na Pa lu ka vu	Na lu ka gu	ra ---
3	R S N D S,,,	M G R G	P,,,
	Ka ri va ra da ---	Ma ri mari	na ---
4	D P D Ṛ Ś,,,	Ṛ Ś N D	P M G R
	Va da ra mu Kro ---	la ra ka ni	Ka ra mu ga (Pallavi)

CHARANAM-3

1	P , , , M G R G Ra - - - Na ga dha ra	D , , , Ra - - -	M G R G Mu ra ha ra
2	P , , , M G R G Ra - - - Bhava ha ra	P , P , Ra - ve -	P , , , ra - - -
3	Ġ , , , Ġ Ś N D Ee - - - Ma gu va nu	Ġ , , , Ee - - -	Ġ Ś N D la la la nu
4	Ś , , , Ġ Ś N D Ee - - - So ga si ni	Ś , Ś , Che - ko -	Ś , , , ra - - -
5	Ġ , Ġ Ś Ġ , Ġ , Ko - ri ka lim - bon -	Ġ , , , da - - -	Ġ , Ś N Den - da mu
6	D , D , D , , , Nee - ya - na - - -	P , M G Je - ra nu	G , G , Nin - jen -
7	G , , , S R G D tha - - - Ma ru va gu	P , , , ra - - -	Ġ Ś Ġ Ġ Ka ra mu la
8	Ś , , , Ġ Ġ Ś N' Cho - - - Ma ri ma ri	D P M G Ni nu Cha ra	R S R G na ne da ra (Pallavi)

Swarajathi - 2 Samba Sivaya (Khamas / Adi)			
Ragam: khamas	Aro: S M ₁ G ₃ M ₁ P D ₂ N ₂ Ś		Ava: Ś N ₂ D ₂ P M ₁ G ₃ R ₂ S
Talam: Adi			
PALLAVI			
1	Ś,,, Ś, N,	D, P,	, M G,
	Sa - - - - - mba -	Si - va -	- ya na
2	M,,, ,, G,	M, P,	D, N,
	ve - - - - - Ra -	ji - tha -	Gi - ri -
ANUPALLAVI			
1	Ś,, Ṙ N,, Ś	D,,, N	P,,, D
	Sa - - mba vi - - ma	No - - - ha	ra - - - pa
2	M,,, P M,, G	M,,, P	D,,, N
	ra - - thpa ra - - kru	pa - - - ka	ra - - - Shree (Pallavi)
CHARANAM-1			
1	Ś, R, Ś N N,	Ś, N D	D, N,
	Nee - ve - Gu ru Dai -	vam - ba ni	ye - ve -
2	D P P, D, M G	S M, G	M P D N
	la nu Se - vim - Pu ru	sa da - Ma	di ni si va (Pallavi)
CHARANAM-2			
1	ŚR Ś N Ś,,,	NŚ N D	N,,,
	Pa ra ma Da ya - - -	ni dhi va nu	su - - -
2	D N D P D,,,	P D P M	P,,,
	Ma ru va ka na - - -	Hru da ya mu	na - - -
3	S S S S M M M M	P P P P	D D D D
	Maha deva Maha Prabho	Sun - da ra	Na - ya ka
4	N Ś N Ś N, D P	D P M G	M P D N
	Su va va ra da - ya ka	Bhava bhaya	ha ra Si va (Pallavi)
CHARANAM-3			
1	D Ś N D P M G M	P,,,	P D N D
	Sthi ra ma du ra pu ra mu	na - - -	Va ra mu lo
2	P M G G M,,,	P N D N	D P D N
	Sa gu ha ru ni - - -	Ni ra tha mu	nu da la chi (Pallavi)

CHARANAM-4			
1	Ś , , , , , Ś N	N D D P	P M G G
	Shree - - - - - Su bha	ka ra sa si	ma ku ta dha
2	M , , , , , P D	N D M G	M P D N
	ra - - - - - Ja ya	Vi ja ya thri	pu ra ha ra
3	Ś M Ġ Ś Ś , Ś ,	Ś R Ś N	N , N ,
	Sri tha ja na lo - la -	thbhutha guna	see - la -
4	N Ś N D D , D ,	P D P M	P , P ,
	Kru tha nu tha ba - la -	pa thi thu ni	lo - la -
5	S M , M G P , P	M D , D	P N , N
	Mu dam - ba la ran - ga	pa da - bja	Mu lan - du
6	D R , R N Ś , Ś	N Ś N D	P , , ,
	Pa dam - bu lu jer - chu	Pa su pa thi	ni - - -
7	M , P M P , D P	D , N D	N , Ś N
	Gna - na mu Dhya - na mu	Sna - na mu	pa - na mu
8	Ś , R Ś R , Ś N	Ś R Ś ,	N D P M
	Da - na mu ma - na mu	A bhi ma -	na ma nu su
9	G M P D N Ś N R	Ś , , ,	Ś R N Ś
	ka ni ka ra mu na cha ra	nam - - -	bu lu ka nu
10	D N P D M , , ,	D P M - G	M P D N
	ko nu sru thu lan - - -	nu thu la cha	ra na nu su (Pallavi)
CHARANAM-5 (Khanda Gathi)			
1	Ś , R Ś , N , D N ,	Ś , N D ,	P , , ,
	Sa - ra sa - re ku ni	Na - ma man	thram - - -
2	P , D N , D , P M ,	P , M G ,	M , , ,
	Ko - ri na - nu - ni pa -	da - bja man	thram - - -
5	M , G M , P , M P ,	D , P D ,	N , D N ,
	Da - su dow Chi - nni Kri -	shnu - ni ki	dhik - ku ni
6	Ś , R Ś , N , D N ,	Ś , N D ,	M , P D ,
	ve - ya ni Sok - ka na -	du ni nam -	mu - ko ni (Pallavi)

Swarajathi - 3 Raveme Maguva.. (Ananda Bhairavi / Adi)			
Ragam: AnandaBhairavi	Aro: SG*2 R2G*2M1 PD2 PŚ	Ava: ŚN2D2P M1G*2 R2S	
Talam: Adi			
PALLAVI			
1	P, , , P M G M	P, M,	P M G R
	Ra - - - - - ve -	- - me -	ma - gu -
2	S, , , , , M,	G, , R	S, N,
	va - - - - - vi -	na - - vu	da - ka -
3	S, , , , , S,	, , N,	G, R,
	va - - - - - ve -	- - du -	ka - nu -
4	S G R G, M G M	P D P P	, M G M
	Ka ru na ne - du va ka	ku lu ka tho	- du ko ni (Pallavi)
ANUPALLAVI			
1	P, , P, , P,	N, N,	Ś, Ś,
	Ve - - ve - - ga -	mu - ka -	ja - ni -
2	Ś, , Ṁ, , Ġ,	Ṛ, N,	Ś, Ś,
	na - - vim - - pu -	ka - nu -	ko - ni -
3	P, , Ś, , Ś,	N, D,	P, M,
	ee - - va - - - du -	va - la -	da - ni -
4	M,, P, , M,	G, R,	G, M,
	ee - - ma - - ta -	vi - nu -	ma - ni - (Pallavi)
CHARANAM-1			
1	P, P, D P M G	M, M,	P M G R
	A - ma - ni ni va ka	le - mo -	cha lu vu ni
2	G, G, M G R S	N, S G	R M G R
	ke - mo - ga na mu ka	tho - chi na	nu ma ra che
3	R S N, S G R S	P M G R	N S, G
	na ta ne - ma nu ko nu	ya tha ni ka	ma nam bu
4	R, M G, P M,	P D P P	, M G M
	nan - du ne - mi tho	cha ga nu um	- di ga da Pallavi)

CHARANAM-2

1	P, D P M G M, Shree ga ru da - sho -	M , , , ba - - -	M, P M na - thri vi
2	G R G, G, , , Pu du ne - da - - -	M P, M che lin - ga	G R S N la che na ta
3	S M, G R S M P na nun ga lu va lu ra	, MGR - ju ga la	P Ś, N nu dhel - su
4	D P M P, M G M na ta u pa - ya mu nu	N, S G thel - pi tho	, R G M - du ko ni Pallavi)

APPENDIX

APPENDIX

1) 72 Mela Karta Ragas

Suddha-Madhyama Ragas

CHAKRA 1 - INDU			
Mela #	Mela Name	Arohanam	Avarohanam
1	Kanakangi	S R1 G1 M1 P - D1 N1 Ś	Ś N1 D1 P M1 G1 R1 S
2	Ratnangi	S R1 G1 M1 P - D1 N2 Ś	Ś N2 D1 P M1 G1 R1 S
3	Ganamurti	S R1 G1 M1 P - D1 N3 Ś	Ś N3 D1 P M1 G1 R1 S
4	Vanaspati	S R1 G1 M1 P - D2 N2 Ś	Ś N2 D2 P M1 G1 R1 S
5	Manavati	S R1 G1 M1 P - D2 N3 Ś	Ś N3 D2 P M1 G1 R1 S
6	Tanarupi	S R1 G1 M1 P - D3 N3 Ś	Ś N3 D3 P M1 G1 R1 S

CHAKRA 2 - NETRA			
Mela #	Mela Name	Arohanam	Avarohanam
7	Senavati	S R1 G2 M1 P - D1 N1 Ś	Ś N1 D1 P M1 G2 R1 S
8	Hanumatodi	S R1 G2 M1 P - D1 N2 Ś	Ś N2 D1 P M1 G2 R1 S
9	Dhenuka	S R1 G2 M1 P - D1 N3 Ś	Ś N3 D1 P M1 G2 R1 S
10	Natakapriya	S R1 G2 M1 P - D2 N2 Ś	Ś N2 D2 P M1 G2 R1 S
11	Kokilapriya	S R1 G2 M1 P - D2 N3 Ś	Ś N3 D2 P M1 G2 R1 S
12	Rupavati	S R1 G2 M1 P - D3 N3 Ś	Ś N3 D3 P M1 G2 R1 S

CHAKRA 3 - AGNI			
Mela #	Mela Name	Arohanam	Avarohanam
13	Gayakapriya	S R1 G3 M1 P - D1 N1 Ś	Ś N1 D1 P M1 G3 R1 S
14	Vakulabharanam	S R1 G3 M1 P - D1 N2 Ś	Ś N2 D1 P M1 G3 R1 S
15	Mayamalavagaula	S R1 G3 M1 P - D1 N3 Ś	Ś N3 D1 P M1 G3 R1 S
16	Chakravakam	S R1 G3 M1 P - D2 N2 Ś	Ś N2 D2 P M1 G3 R1 S
17	Suryakantam	S R1 G3 M1 P - D2 N3 Ś	Ś N2 D2 P M1 G3 R1 S
18	Hatakambari	S R1 G3 M1 P - D3 N3 Ś	Ś N3 D3 P M1 G3 R1 S

CHAKRA 4 - VEDA				
Mela #	Mela Name	Arohanam		Avarohanam
19	Jhankaradhwani	S R2 G2 M1 P - D1	N1 Ś	Ś N1 D1 P M1 G2 R2 S
20	Natabhairavi	S R2 G2 M1 P - D1	N2 Ś	Ś N2 D1 P M1 G2 R2 S
21	Keeravani	S R2 G2 M1 P - D1	N3 Ś	Ś N3 D1 P M1 G2 R2 S
22	Kharaharapriya	S R2 G2 M1 P - D2	N2 Ś	Ś N2 D2 P M1 G2 R2 S
23	Gowrimanohari	S R2 G2 M1 P - D2	N3 Ś	Ś N3 D2 P M1 G2 R2 S
24	Varunapriya	S R2 G2 M1 P - D3	N3 Ś	Ś N3 D3 P M1 G2 R2 S

CHAKRA 5 - BANA				
Mela #	Mela Name	Arohanam		Avarohanam
25	Mararanjani	S R2 G3 M1 P - D1	N1 Ś	Ś N1 D1 P M1 G3 R2 S
26	Charukesi	S R2 G3 M1 P - D1	N2 Ś	Ś N2 D1 P M1 G3 R2 S
27	Sarasangi	S R2 G3 M1 P - D1	N3 Ś	Ś N3 D1 P M1 G3 R2 S
28	Harikambhoji	S R2 G3 M1 P - D2	N2 Ś	Ś N2 D2 P M1 G3 R2 S
29	Dheerashankarabharanam	S R2 G3 M1 P - D2	N3 Ś	Ś N3 D2 P M1 G3 R2 S
30	Naganandini	S R2 G3 M1 P - D3	N3 Ś	Ś N3 D3 P M1 G3 R2 S

CHAKRA 6 - RUTU				
Mela #	Mela Name	Arohanam		Avarohanam
31	Yagapriya	S R3 G3 M1 P - D1	N1 Ś	Ś N1 D1 P M1 G3 R3 S
32	Ragavardhani	S R3 G3 M1 P - D1	N2 Ś	Ś N2 D1 P M1 G3 R3 S
33	Gangeyabhushani	S R3 G3 M1 P - D1	N3 Ś	Ś N3 D1 P M1 G3 R3 S
34	Vagadheeswari	S R3 G3 M1 P - D2	N2 Ś	Ś N2 D2 P M1 G3 R3 S
35	Soolini	S R3 G3 M1 P - D2	N3 Ś	Ś N3 D2 P M1 G3 R3 S
36	Chalanata	S R3 G3 M1 P - D3	N3 Ś	Ś N3 D3 P M1 G3 R3 S

Prathi-Madhyama Ragas

CHAKRA 7 - RISHI				
Mela #	Mela Name	Arohanam		Avarohanam
37	Salagam	S R1 G1 M2 P - D1	N1 Ś	Ś N1 D1 P M2 G1 R1 S
38	Jalarnavam	S R1 G1 M2 P - D1	N2 Ś	Ś N2 D1 P M2 G1 R1 S
39	Jhalavarali	S R1 G1 M2 P - D1	N3 Ś	Ś N3 D1 P M2 G1 R1 S
40	Navaneetam	S R1 G1 M2 P - D2	N2 Ś	Ś N2 D2 P M2 G1 R1 S
41	Pavani	S R1 G1 M2 P - D2	N3 Ś	Ś N3 D2 P M2 G1 R1 S
42	Raghupriya	S R1 G1 M2 P - D3	N3 Ś	Ś N3 D3 P M2 G1 R1 S

CHAKRA 8 - VASU				
Mela #	Mela Name	Arohanam		Avarohanam
43	Gavambodhi	S R1 G2 M2 P - D1	N1 Ś	Ś N1 D1 P M2 G2 R1 S
44	Bhavapriya	S R1 G2 M2 P - D1	N2 Ś	Ś N2 D1 P M2 G2 R1 S
45	Subhantuvanarali	S R1 G2 M2 P - D1	N3 Ś	Ś N3 D1 P M2 G2 R1 S
46	Shadvidhamargini	S R1 G2 M2 P - D2	N2 Ś	Ś N2 D2 P M2 G2 R1 S
47	Suvarnangi	S R1 G2 M2 P - D2	N3 Ś	Ś N3 D2 P M2 G2 R1 S
48	Divyamani	S R1 G2 M2 P - D3	N3 Ś	Ś N3 D3 P M2 G2 R1 S

CHAKRA 9- BRAHMA				
Mela #	Mela Name	Arohanam		Avarohanam
49	Dhavalambari	S R1 G3 M2 P - D1	N1 Ś	Ś N1 D1 P M2 G3 R1 S
50	Namanarayani	S R1 G3 M2 P - D1	N2 Ś	Ś N2 D1 P M2 G3 R1 S
51	Kamavardhini	S R1 G3 M2 P - D1	N3 Ś	Ś N3 D1 P M2 G3 R1 S
52	Ramapriya	S R1 G3 M2 P - D2	N2 Ś	Ś N2 D2 P M2 G3 R1 S
53	Gamanasrama	S R1 G3 M2 P - D2	N3 Ś	Ś N3 D2 P M2 G3 R1 S
54	Viswambari	S R1 G3 M2 P - D3	N3 Ś	Ś N3 D3 P M2 G3 R1 S

CHAKRA 10- DISHI				
Mela #	Mela Name	Arohanam		Avarohanam
55	Syamalangi	S R2 G2 M2 P - D1	N1 Ś	Ś N1 D1 P M2 G2 R2 S
56	Shanmukhapriya	S R2 G2 M2 P - D1	N2 Ś	Ś N2 D1 P M2 G2 R2 S
57	Simhendramadhyamam	S R2 G2 M2 P - D1	N3 Ś	Ś N3 D1 P M2 G2 R2 S
58	Hemavati	S R2 G2 M2 P - D2	N2 Ś	Ś N2 D2 P M2 G2 R2 S
59	Dharmavati	S R2 G2 M2 P - D2	N3 Ś	Ś N3 D2 P M2 G2 R2 S
60	Neetimati	S R2 G2 M2 P - D3	N3 Ś	Ś N3 D3 P M2 G2 R2 S

CHAKRA 11- RUDRA				
Mela #	Mela Name	Arohanam		Avarohanam
61	Kantamani	S R2 G3 M2 P - D1	N1 Ś	Ś N1 D1 P M2 G3 R2 S
62	Rishabhapriya	S R2 G3 M2 P - D1	N2 Ś	Ś N2 D1 P M2 G3 R2 S
63	Latangi	S R2 G3 M2 P - D1	N3 Ś	Ś N3 D1 P M2 G3 R2 S
64	Vachaspati	S R2 G3 M2 P - D2	N2 Ś	Ś N2 D2 P M2 G3 R2 S
65	Mechakalyani	S R2 G3 M2 P - D2	N3 Ś	Ś N3 D2 P M2 G3 R2 S
66	Chitrambari	S R2 G3 M2 P - D3	N3 Ś	Ś N3 D3 P M2 G3 R2 S

CHAKRA 12- ADITYA				
Mela #	Mela Name	Arohanam		Avarohanam
67	Sucharitra	S R3 G3 M2 P - D1	N1 Ś	Ś N1 D1 P M2 G3 R3 S
68	Jyotiswaroopini	S R3 G3 M2 P - D1	N2 Ś	Ś N2 D1 P M2 G3 R3 S
69	Dhatuwardhini	S R3 G3 M2 P - D1	N3 Ś	Ś N3 D1 P M2 G3 R3 S
70	Nasikabhooshani	S R3 G3 M2 P - D2	N2 Ś	Ś N2 D2 P M2 G3 R3 S
71	Kosalam	S R3 G3 M2 P - D2	N3 Ś	Ś N3 D2 P M2 G3 R3 S
72	Rasikapriya	S R3 G3 M2 P - D3	N3 Ś	Ś N3 D3 P M2 G3 R3 S

2) Sudha-Madhyama / Prathi-Madhyama Ragam Correspondence Table

#	Sudha-Madhyama Ragam (M1)	Notes/ Scale	#	Prathi-Madhyama Ragam (M2)
CHAKRA 1 - INDU			CHAKRA 7 - RISHI	
1	Kanakangi	S R1 G1 M P - D1 N1 Ś	37	Salagam
2	Ratnangi	S R1 G1 M P - D1 N2 Ś	38	Jalarnavam
3	Ganamurti	S R1 G1 M P - D1 N3 Ś	39	Jhalavarali
4	Vanaspati	S R1 G1 M P - D2 N2 Ś	40	Navaneetam
5	Manavati	S R1 G1 M P - D2 N3 Ś	41	Pavani
6	Tanarupi	S R1 G1 M P - D3 N3 Ś	42	Raghupriya
CHAKRA 2 - NETRA			CHAKRA 8 - VASU	
7	Senavati	S R1 G2 M P - D1 N1 Ś	43	Gavambodhi
8	Hanumatodi	S R1 G2 M P - D1 N2 Ś	44	Bhavapriya
9	Dhenuka	S R1 G2 M P - D1 N3 Ś	45	Subhapantharali
10	Natakapriya	S R1 G2 M P - D2 N2 Ś	46	Shadvidhamargini
11	Kokilapriya	S R1 G2 M P - D2 N3 Ś	47	Suvarnangi
12	Rupavati	S R1 G2 M P - D3 N3 Ś	48	Divyamani
CHAKRA 3 - AGNI			CHAKRA 9 - BRAHMA	
13	Gayakapriya	S R1 G3 M P - D1 N1 Ś	49	Dhavalambari
14	Vakulabharanam	S R1 G3 M P - D1 N2 Ś	50	Namanarayani
15	Mayamalavagaula	S R1 G3 M P - D1 N3 Ś	51	Kamavardhini
16	Chakravakam	S R1 G3 M P - D2 N2 Ś	52	Ramapriya
17	Suryakantam	S R1 G3 M P - D2 N3 Ś	53	Gamanasrama
18	Hatakambari	S R1 G3 M P - D3 N3 Ś	54	Viswambari

#	Sudha-Madhyama Ragam (M1)	Notes/ Scale	#	Prathi-Madhyama Ragam (M2)
CHAKRA 4 - VEDA			CHAKRA 10- DISHI	
19	Jhankaradhwani	S R2 G2 M P - D1 N1 Ś	55	Syamalangi
20	Natabhairavi	S R2 G2 M P - D1 N2 Ś	56	Shanmukhapriya
21	Keeravani	S R2 G2 M P - D1 N3 Ś	57	Simhendramadhyamam
22	Kharaharapriya	S R2 G2 M P - D2 N2 Ś	58	Hemavati
23	Gowrimanohari	S R2 G2 M P - D2 N3 Ś	59	Dharmavati
24	Varunapriya	S R2 G2 M P - D3 N3 Ś	60	Neetimati
CHAKRA 5 - BANA			CHAKRA 11- RUDRA	
25	Mararanjani	S R2 G3 M P - D1 N1 Ś	61	Kantamani
26	Charukesi	S R2 G3 M P - D1 N2 Ś	62	Rishabhapriya
27	Sarasangi	S R2 G3 M P - D1 N3 Ś	63	Latangi
28	Harikambhoji	S R2 G3 M P - D2 N2 Ś	64	Vachaspati
29	Dheera-Shankarabharanam	S R2 G3 M P - D2 N3 Ś	65	Mecha-Kalyani
30	Naganandini	S R2 G3 M P - D3 N3 Ś	66	Chitrambari
CHAKRA 6 - RUTU			CHAKRA 12- ADITYA	
31	Yagapriya	S R3 G3 M P - D1 N1 Ś	67	Sucharitra
32	Ragavardhani	S R3 G3 M P - D1 N2 Ś	68	Jyotiswaroopini
33	Gangeyabhushani	S R3 G3 M P - D1 N3 Ś	69	Dhatuvar dhini
34	Vagadheeswari	S R3 G3 M P - D2 N2 Ś	70	Nasikabhooshani
35	Soolini	S R3 G3 M P - D2 N3 Ś	71	Kosalam
36	Chalanata	S R3 G3 M P - D3 N3 Ś	72	Rasikapriya

NOTES:

1. In the above table, if you replace "M" with **M1**, you will get the Scale of the **Sudha-** Madhyama Ragam. If you replace "M" with "**M2**", you will get the Scale of the **Prathi-**Madhyama Ragam.
2. If you **add "36"** to the Melakarta Number of a Sudha-Madyama Ragam, you will get the Number of the corresponding Prathi-Madhyama Ragam.
For Example,
29 (Dheera-Sankarabharanam) + **36** = **65** (Mecha-Kalyani)

Happy Learning !